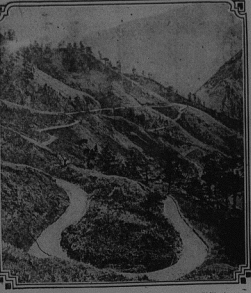


A PHILIPPINE TRAVELOGUE

THE ROMANTIC ISLANDS OF THE FAR EAST. FOUR HUNDRED AND FIFTY MILES FORMING A Mosaic FOR TOURISTS AND POPULAR RESORTS.



The Zigzag on the Way to Baguio, Summer Capital of the Philippines.

All aboard! Let's go! We're starting from Manila, the great metropolitan, Americanized Oriental city, and will travel by automobile 200 miles to the north to Baguio, the summer capital of the Philippines. The trip can also be made by train.

We have ahead of us one of the most scenic, spectacular and thrilling automobile trips in the world. We will have excellent roads all the way. The Philippines are, in fact, a paradise for motorists, possessing 2,500 miles of the most magnificent roads.

The first part of the trip is through tropical small towns and then across the central plain of Luzon and through several rich and fertile provinces, where tropical vegetation is seen at its best. Here one is impressed with the great agricultural wealth of the Philippines, which represents one of the East's greatest producing areas, with the advantage of immense natural resources for the development of further production. It is regrettably true that even in the United States there is far from any real understanding of the possibilities of the islands.

At some points rice fields, looking to the distance like the greenest of green lawns, stretch away as far as the eye can see. If you want color, if you want to feel the sun and the breeze, if it is an Oriental twilight, pass this way as the red sun sets at the end of the trip, it is lovely looking behind the mounting masses of green fields. At first you cry out in ecstasy at the gorgeous scene. But as you ride along, your eyes fastened on the mountains of blue and color, and with the increasingly black Oriental night coming on, you become enraptured. You no longer try to express your feelings. You cannot. You realize that those new feet changing, colorful materials, gleams in the heavens and on the mountains are pictures that no man can adequately describe nor human hands do violence. So what the use of trying!

True, there are but impressions, but the traveler considers himself afflicted in mentioning them, for they are a part of the trip to Baguio and return. Indeed, the persons referred to all parts of the Philippines leave an impression on the mind of the tourist that is everlasting.

We leave the plains and tropical forests and enter the zone of rugged peaks. We pass from the soft, luscious hills of the warm lowlands to the cold, high peaks of some of the temperate zone, all within a few hours' time.

We pile after mile the road now follows the tortuous course of a river, the road lying in a gash in the canyon, the rocky sides of a granite canyon.

The Philippines are rich in hydroelectric possibilities. This power is the greatest power on earth. And it is overlooking. Your traveler is not at a moment's rest that man is a simple, but he professes that one day there will be innumerable Philippine government owned hydro-electric plants in the canyon we are now passing through. Think of the possibilities of such a project! Today the trip from Manila to Baguio is not expensive and is without a headache. We are the family, many of whom may live and work in the Philippines. We are the family of that a blessing it would be to Philippine mothers and children to meet their fathers here. We are the family of that a blessing it would be to Philippine mothers and children to meet their fathers here. We are the family of that a blessing it would be to Philippine mothers and children to meet their fathers here.

the trip to Baguio within the course of hundreds of thousands of Philippine. Not only is there sufficient power in this river to electrify a line from Manila to Baguio, but to operate the street railways of Manila, light the city and furnish power for manufacturing concerns.

But we have now arrived at Camp Oso. From this point the scenery rapidly changes as the elevation increases. We are traveling over the famous Benguet road, the construction of which through the mountains is a most remarkable engineering triumph. At places the road is blasted out of the solid granite, riding on the edge of a 100 feet precipice twelve or fifteen feet



"At times we seemed perilously near the jumping of place."

is on the rim of the world. Some of the turns are so sharp it is impossible to see 20 feet ahead, and we seem to be perpetually near the jumping off place. We wonder if it is safe to lean out and peer into the canyon for below, and when we do we are perfectly satisfied we are flirting with death. Yet the trip is a safe one, providing our driver has better nerves than our own.

All too soon we reach the outskirts of Baguio, a city among the clouds, and are rather surprised at the modern city we find it to be. In one hour the city has grown from a village of huts to the now proudly named mountain capital of the Philippines, sometimes called the Queen City of the North. It is the Philippines Manila. It is the Philippines Manila. It is the Philippines Manila. It is the Philippines Manila.

Baguio ranges in elevation from 5,000 to 6,500 feet and is surrounded on all sides by high mountains, rain forest and "baguio" (lowering into the area at a height of almost 8,000 feet).

Ahead from the snow, which is snow, the great blessing of Baguio is its temperate climate, which is indeed a golden to those unaccustomed to the tropical temperatures of the lowlands. Not only is the mountain air rich in oxygen, but it has been demonstrated to be extraordinarily free from germs of all kinds.

Each year during the hot season the school teachers of the entire archipelago are invited by the government to spend a month at the teachers' camp at Baguio. The government also has a school for the hot months. American army and navy officers also go to Baguio for the hot months. American army and navy officers also go to Baguio for the hot months. American army and navy officers also go to Baguio for the hot months.

We All Know That Sooner or Later Prices Must Necessarily Drop!

Every Merchant Must, at Some Time in the Near Future, Take a Loss Through the Reduction in Value of His Stock.

We Are Going to Take OURS NOW

On Monday Morning, May 24th, We started Selling Every Article in Our Stock at a

15 percent Reduction

This all comes out of our own pocket as wholesale prices have not as yet decreased but we know it is sure to come and are willing to assume the responsibility of taking the lead.

JUST TO ILLUSTRATE:

- 1 pint Mason fruit jars, \$1.20 per Dozen, Less 15% **\$1.02**
 - 1 quart Mason jars, \$1.35 per Dozen, Less 15% **\$1.15**
 - 1-2 Gallon Mason jars, \$1.70 per Dozen, Less 15% **\$1.45**
- Compare these Prices with any others obtainable.

A. E. STREETER

Phone Van Nuys 29

Van Nuys, Calif.

H. W. ALLEN

Plumbing and Tinning
General Repairing.

Telephone 118-111
Canoga Avenue and Wyandotte Street

See ALFRED FOULSEN for Trucking & Transferring.

He also carries a nice line of selected Soda Water and Purified Water; and don't forget he's still the "ICE MAN" and solicits your trade.

Subscribe for the Gazette

LAST CHANCE

THIS YEAR

Mission Play

CLOSES

May 30th

Until that time performances every afternoon except Monday; and on Wednesday and Saturday Evenings Only.

ICE ICE ICE ICE



SALT, PEPPER, SUGAR.

"The Sugar Bowl doesn't appreciate us," said the Salt Cellar.

"Who do you mean when you say we?" asked the Sugar Bowl.

"I mean Pepper Shaker and I mean," said the Salt Cellar.

"And why do you not think I appreciate you?" asked the Sugar Bowl.

"The more I don't know why you don't," said the Salt Cellar. "Anything would think you ought to. Any one, with any sense, appreciates us."

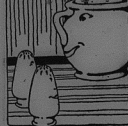
"Oh come," said the Sugar Bowl. "I expect you to be a little rude at times. I respect you would be a strong sharp and all of that. But I do not mind. I am sweet enough to forgive you."

"That you haven't told me whether you appreciate me or not?" said the Salt Cellar. "And I do want to make the Sugar Bowl say that it does appreciate the Salt Cellar and the Pepper Shaker. It may be now that the Sugar Bowl had something else before sweetening."

"What else could I have or would I want to have besides sweetening?" asked the Sugar Bowl. "You'll think I mean that I am always sweet?"

"No," said the Salt Cellar. "It is not. There are lots of sweet creatures who have my sweet sense and who never do any harm, but at the same time they don't do anything especially kind and they don't do anything especially helpful."

"They're sweet enough but they haven't much character. Now you will show character if you just make sweetly upon me but if you will



"I Will Admit It!"

to admit that the Salt Cellar and the Pepper Shaker have good work to do in the world."

"Ah, yes," said the Sugar Bowl. "I will admit it, and I think I should appreciate other creatures and things more than I do. I am glad indeed that I had this talk."

"Just because I never did anything just because I never did anything just because I never did anything. I thought I was good enough. But I wasn't. I understand that now."

"Creatures and things aren't to be satisfied who won't take the trouble to go out of their way to do nice things. And as the Sugar Bowl came walking around looking for also things to do at least it can admire the Salt Cellar and the Pepper Shaker for the work they do in seasoning and making things have a good taste."

"Ah, Sugar Bowl," said the Salt Cellar. "I am glad to hear you talk this way. For some time I have been afraid that you didn't have enough character. I was very much afraid that you were becoming too sugary and too weak!"

"The Pepper Shaker would tell you too much he thinks of you as if he comes about too much. It is not to make people sneeze. He doesn't like to do that. He can't help it if the sneezing of his is used, but he tries to be used like that. He likes to add to the taste of things, but not to be made out a great creature."

"Yes, he had a terrible show once. He was treated so badly! It wasn't fair to him at all."

"Some very mean boys and girls thought it would be fun to put sneezing powder in the flowers and when they would give to their friends to smell. They were a great deal of trouble to someone they would laugh."

"I have a great deal of my Pepper Shaker and I would be glad to give some to the bees. Oh, he did feed so badly about a year ago. Straight and out honest. The people who sneezed were miserable. Your nose hurts, their throats hurt and they couldn't sleep for several nights."

"Oh little girl! You had sneezed powder on so much that her eyes were sore for several days for the sneezing powder. She was so hot and red and her throat had never been quite so strong since."

"So little girl! We should all be used to our places and do too much of any one. So for it too much sugar is used things will be spoiled and if too much pepper will be used the people and salt creatures are taken a mean advantage."

The Greatest Change.

"Who water becomes hot," asked the Salt Cellar. "This is the greatest change that takes place."

The greatest change, water, said the Salt Cellar. "The change to steam."—Op. Duha Almada.

QUALITIES OF COMMON FRUITS.

Every housekeeper who plans the meals should have a clear understanding of the qualities of fruit and should know the children to be healthy.

Apple—Sweet, acid, sub-acid.

Apricot—Sweet, acid, sub-acid.

Banana—Sweet, acid, sub-acid.

Blackberry—Iron, phosphates.

Blossom—Excessive citric acid, sulphuric, potash salts, lime and magnesia.

Orange—Moderate citric acid, lactic, malic.

Grapefruit—Excessive citric acid, bitter root, putrid.

Strawberry—Citric and malic acid, antiseptic, potash, lime, soda.

Cherry—Sour.

Cranberry—Citric acid, iron, tannin.

Currant—Citric acid.

Gooseberry—Citric acid and malic acid.

Blackberry—Iron, phosphates.

Blossom—Excessive citric acid, sulphuric, potash salts, lime and magnesia.

Orange—Moderate citric acid, lactic, malic.

Grapefruit—Excessive citric acid, bitter root, putrid.

Strawberry—Citric and malic acid, antiseptic, potash, lime, soda.

Cherry—Sour.

Cranberry—Citric acid, iron, tannin.

Currant—Citric acid.

Gooseberry—Citric acid and malic acid.

Blackberry—Iron, phosphates.

Blossom—Excessive citric acid, sulphuric, potash salts, lime and magnesia.

Orange—Moderate citric acid, lactic, malic.

Grapefruit—Excessive citric acid, bitter root, putrid.

Strawberry—Citric and malic acid, antiseptic, potash, lime, soda.

Cherry—Sour.

Cranberry—Citric acid, iron, tannin.

Currant—Citric acid.

Gooseberry—Citric acid and malic acid.

Blackberry—Iron, phosphates.

Blossom—Excessive citric acid, sulphuric, potash salts, lime and magnesia.

Orange—Moderate citric acid, lactic, malic.

Grapefruit—Excessive citric acid, bitter root, putrid.

Strawberry—Citric and malic acid, antiseptic, potash, lime, soda.

Cherry—Sour.

Cranberry—Citric acid, iron, tannin.

Currant—Citric acid.

Gooseberry—Citric acid and malic acid.

Blackberry—Iron, phosphates.

Blossom—Excessive citric acid, sulphuric, potash salts, lime and magnesia.

Orange—Moderate citric acid, lactic, malic.

Grapefruit—Excessive citric acid, bitter root, putrid.

Strawberry—Citric and malic acid, antiseptic, potash, lime, soda.

Cherry—Sour.

Cranberry—Citric acid, iron, tannin.

Currant—Citric acid.

Gooseberry—Citric acid and malic acid.

Blackberry—Iron, phosphates.

Blossom—Excessive citric acid, sulphuric, potash salts, lime and magnesia.

Orange—Moderate citric acid, lactic, malic.

Grapefruit—Excessive citric acid, bitter root, putrid.

Strawberry—Citric and malic acid, antiseptic, potash, lime, soda.

Cherry—Sour.

Cranberry—Citric acid, iron, tannin.

Currant—Citric acid.

Gooseberry—Citric acid and malic acid.

Blackberry—Iron, phosphates.

Blossom—Excessive citric acid, sulphuric, potash salts, lime and magnesia.

Orange—Moderate citric acid, lactic, malic.

Grapefruit—Excessive citric acid, bitter root, putrid.

Strawberry—Citric and malic acid, antiseptic, potash, lime, soda.

Cherry—Sour.

Cranberry—Citric acid, iron, tannin.

Currant—Citric acid.

Gooseberry—Citric acid and malic acid.

Blackberry—Iron, phosphates.

Blossom—Excessive citric acid, sulphuric, potash salts, lime and magnesia.

Orange—Moderate citric acid, lactic, malic.

Grapefruit—Excessive citric acid, bitter root, putrid.

Strawberry—Citric and malic acid, antiseptic, potash, lime, soda.

Cherry—Sour.

Cranberry—Citric acid, iron, tannin.

Currant—Citric acid.

Gooseberry—Citric acid and malic acid.

Blackberry—Iron, phosphates.

Blossom—Excessive citric acid, sulphuric, potash salts, lime and magnesia.

Orange—Moderate citric acid, lactic, malic.

Grapefruit—Excessive citric acid, bitter root, putrid.

Strawberry—Citric and malic acid, antiseptic, potash, lime, soda.

Cherry—Sour.

Cranberry—Citric acid, iron, tannin.

Currant—Citric acid.

Gooseberry—Citric acid and malic acid.

Blackberry—Iron, phosphates.

Blossom—Excessive citric acid, sulphuric, potash salts, lime and magnesia.

Orange—Moderate citric acid, lactic, malic.

Grapefruit—Excessive citric acid, bitter root, putrid.

Strawberry—Citric and malic acid, antiseptic, potash, lime, soda.

Cherry—Sour.

Cranberry—Citric acid, iron, tannin.

Currant—Citric acid.

Gooseberry—Citric acid and malic acid.

Blackberry—Iron, phosphates.

Blossom—Excessive citric acid, sulphuric, potash salts, lime and magnesia.

Orange—Moderate citric acid, lactic, malic.

Grapefruit—Excessive citric acid, bitter root, putrid.

Strawberry—Citric and malic acid, antiseptic, potash, lime, soda.

Cherry—Sour.

Cranberry—Citric acid, iron, tannin.

Currant—Citric acid.

Gooseberry—Citric acid and malic acid.

Blackberry—Iron, phosphates.

Blossom—Excessive citric acid, sulphuric, potash salts, lime and magnesia.

Orange—Moderate citric acid, lactic, malic.

Grapefruit—Excessive citric acid, bitter root, putrid.

Strawberry—Citric and malic acid, antiseptic, potash, lime, soda.

Cherry—Sour.

Cranberry—Citric acid, iron, tannin.

Currant—Citric acid.

Gooseberry—Citric acid and malic acid.

Blackberry—Iron, phosphates.

Blossom—Excessive citric acid, sulphuric, potash salts, lime and magnesia.

Orange—Moderate citric acid, lactic, malic.

Grapefruit—Excessive citric acid, bitter root, putrid.

Strawberry—Citric and malic acid, antiseptic, potash, lime, soda.

Cherry—Sour.

Cranberry—Citric acid, iron, tannin.

Currant—Citric acid.

Gooseberry—Citric acid and malic acid.

Blackberry—Iron, phosphates.

Blossom—Excessive citric acid, sulphuric, potash salts, lime and magnesia.

Orange—Moderate citric acid, lactic, malic.

Grapefruit—Excessive citric acid, bitter root, putrid.

Strawberry—Citric and malic acid, antiseptic, potash, lime, soda.

Cherry—Sour.

Cranberry—Citric acid, iron, tannin.

Currant—Citric acid.

Gooseberry—Citric acid and malic acid.

Blackberry—Iron, phosphates.

Blossom—Excessive citric acid, sulphuric, potash salts, lime and magnesia.

Orange—Moderate citric acid, lactic, malic.

Grapefruit—Excessive citric acid, bitter root, putrid.

Strawberry—Citric and malic acid, antiseptic, potash, lime, soda.

Cherry—Sour.

Cranberry—Citric acid, iron, tannin.

Currant—Citric acid.

Gooseberry—Citric acid and malic acid.

Blackberry—Iron, phosphates.

Blossom—Excessive citric acid, sulphuric, potash salts, lime and magnesia.

Orange—Moderate citric acid, lactic, malic.

Grapefruit—Excessive citric acid, bitter root, putrid.

Strawberry—Citric and malic acid, antiseptic, potash, lime, soda.

Cherry—Sour.

Cranberry—Citric acid, iron, tannin.

Currant—Citric acid.

Gooseberry—Citric acid and malic acid.



Every housekeeper who plans the meals should have a clear understanding of the qualities of fruit and should know the children to be healthy.

Gasoline Shortage

Southern Pacific Company is ready to move promptly to any point in this State or any other state it serves

Gasoline Distillate Kerosene and Fuel Oil

offered it for shipment and is ready to do all in its power to remedy any existing shortage with good service.

Southern Pacific Company

Take Patience.

One has been defined as an individual capacity for taking pains and patience, which is a sort of second course of genius, has the same characteristic. One who will take pains enough will make with a little more of genius. And so one who takes the need of patient, plodding work is likely to succeed, so much what his environment.

At Sunday School.

"Give an account of Italian," said the teacher. "This was a prophet who lived a long way, I'd repeat the student. "After a while a man was sent for a job on the road, and he got very merry with the drinker was his habit, and a nice river horse and, too, went out all the drinker if he had any."

"AIN'T IT A FACT?"

Case says that some of our sweetest smiles can bring "Down in Old Missouri" to such a delightful appealing manner that it makes you feel glad that you are around; but that this same charming lass, who put her a program with endeavor to give out some high-lying statistics that give color to the facts of the "Down, and the singer, too, and makes you wonder who will take the money of most lovers, simply to, have found that we neither understand our appetites."

Italy Windows by Hand.

In making stained-glass windows any bit of the work is done by hand, and it is interesting to realize how many times each piece of glass must be hand-cut. An operator takes of cutting up one day and finding that no less than twelve times were necessary. All the work is done by hand too, even the grinding of the little bits into which the glass is fastened.

A Lending Fiasco.

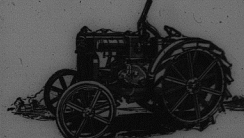
When the favorite in the bathroom or kitchen leak or do not allow the water to flow freely they need a new washer, and the washers cost five cents each. To get on the washer, turn off the water, the rod is usually under the sink or in the basement, and measure the faucet; take off the washer and slip on a new one and turn your water on again and presto! the work is done and so repeat this in a day.

Some Summers.

The height of the Eiffel tower, Paris, and the height of the Washington tower, New York, are the same. The height of the Washington tower, New York, is 555 feet. The height of the Eiffel tower, Paris, is 555 feet.

Advertisement in the Gazette.

The Case is the Leading



Tractor for Orchard or Farm
For Sale by the
Hyden Hardware Company
Greenwood, California.

